

# Corporate Profile

A specialized trading company that supports manufacturing in Japan,  
from proposal to processing of various products



**Seeking to be admired by society,  
trusted by our customers,  
and pursuing happiness for our employees.**

The global market is changing day by day and hour by hour.

Mitsubishi Materials Trading will gain accurate insight into the needs of the times which are evolving towards a more prosperous future and work ambitiously to make dreams into reality together with customers.

### **Aiming to be trading firm where each employee is full of dynamism, constantly taking on new challenges**

As the core trading firm of the Mitsubishi Materials Group, we deliver solid value to customers in Japan and overseas. We offer advantages by combining the broad range of products and materials from the Group's companies with our unique supply chain for machining and other operations. Utilizing our abundant experience accumulated over more than 70 years and dating back to our founding in 1947, and aiming to meet all kinds of needs, we have specialists well-informed in their fields and human resources with comprehensive knowledge.

As a trading firm, it is our people who drive our business forward. For this reason, we attach importance to the development of human resources and are committed to maximizing the potential of our employees. By being full of dynamism and constantly taking on new challenges, each employee will drive our growth and contribute to Mitsubishi Materials Group's vision of "Circulating resources for a sustainable future." We will continue to be a firm beloved by society, trusted by customers, and dedicated to the happiness of its employees.



**Ryosaku Hashimoto,**  
President

## Profile

Company name	MITSUBISHI MATERIALS TRADING CORPORATION
Address	17th Floor, Nihonbashi Hamacho F-Tower, 3-21-1 Nihonbashi Hamacho, Chuo-ku, Tokyo 103-0007, Japan
Representative	Ryosaku Hashimoto, President
Established	May 9, 1947
Capital	393 million JPY
Amount of sales	83.4 billion JPY (as of March 31, 2024)
Main business	<ul style="list-style-type: none"> <li>• Sales of non-ferrous metal ingots, processed metals, machine tools, fuels, chemical products, electronic components, building materials, mineral residues, steel materials, precious metals and other products</li> <li>• Sales of high pressure gas</li> <li>• Environment and recycling business</li> <li>• Material procurement services</li> </ul>
Shareholders	Mitsubishi Materials Corporation 100%
Partner banks	<ul style="list-style-type: none"> <li>• MUFG Bank, Ltd. Shin-Marunouchi Branch</li> <li>• Mitsubishi UFJ Trust and Banking Corporation Head Office</li> </ul>

## History

1947	May	Ryoko Sangyo Corporation was established as a subsidiary of Mitsubishi Mining Company Ltd. (now Mitsubishi Materials Corporation). It started the business to supply operation goods to the parent company and worked as their nonlife insurance agent.
1962	Mar.	Construction division expanded following registration with the Ministry of Construction under the Construction Business Act.
1989	Dec.	Opened a branch in Singapore.
1995	Dec.	Opened a branch in Seoul.
1996	Mar.	Established Ryoko Services Corporation by means of merger of service subsidiaries.
1999	Apr.	Established Ryoko Sangyo (Thailand) Co., Ltd. in Bangkok.
2001	Apr.	Merged with Sanko Materials Co., Ltd.
2003	Oct.	Merged with Godo Kinzoku Co., Ltd.
2004	Apr.	Opened an office in Shanghai.
		Kanagawa Branch examined and registered as ISO 9001-compliant organization.
	Dec.	Osaka Branch examined and registered as ISO 9001-compliant organization.
		Himeji Branch examined and registered as ISO 9001-compliant organization.
2005	Sep.	Entire company examined and registered as ISO 14001-compliant organization.
2006	Sep.	Opened a branch in Perth, Australia (now the Australia Branch).
2007	Jan.	Merged with Maruse Co., Ltd.
	Aug.	Became a wholly-owned subsidiary of Mitsubishi Materials Corporation through a stock swap.
2011	Mar.	Silicon Parts Group examined and registered as ISO 9001-compliant organization.
	Sep.	Opened an office in Hanoi.
	Oct.	Fukuoka Branch examined and registered as ISO 9001-compliant organization.
		Nagasaki Office examined and registered as ISO 9001-compliant organization.
2013	Apr.	Established PT. Ryoko Sangyo Indonesia.
2014	Jul.	Changed company name to Mitsubishi Materials Trading Corporation.
2020	Apr.	Opened an office in Taipei.
	Oct.	Entire company examined and registered as ISO 9001-compliant organization. (Complies with ISO 14001 under integrated operation.)



## Our Advantages

Mitsubishi Materials Trading demonstrates another level of strength and provides more value to customers by combining three resources—its strengths in human resources, as a group and in its experience—with three challenges which have recently been set aimed at the acquisition of greater capabilities in terms of listening to customers, circulating resources and procuring materials.

New value creation starting with our strengths in human resources

**Strengths in human resources**

**The strength of having a large pool of well-balanced human resources**

In a balanced manner, we develop and assign specialists in specific areas and generalists with multidisciplinary knowledge. Many of our human resources are familiar with many different products and technologies and understand the facts involved in our customers' industries. It is our human resources that enable us to confidently respond to the needs of our customers. Because we are a trading firm without factories or machinery/equipment, we continually work to enhance the value of our human resources based on the idea that people are a company's resources.

**Our strength as a group consisting of about 100 companies led by Mitsubishi Materials Corporation**

Mitsubishi Materials Group deals in all kinds of materials, including non-ferrous metals such as copper, carbide tools, ceramics and silicon. As the one and only trading company of Mitsubishi Materials Group, we deliver products and technologies of the nearly 100 Group companies to customers with greater speed and at more reasonable prices.

**Strength as a group**

**Strength of experience**

**The strength of the company's experience accumulated over the 70 years since the company was founded**

Since our founding in 1947, we have refined our strengths in material procurement and our technologies for processing the materials. Also, we have continued to learn what we should do to build trust with our customers and live up to their expectations. We have an environment that enables us to provide the high-quality services unique to a traditional materials trading company based on our accumulated experience.

**Three resources**

## Create more value

Three resources × Three challenges = More value provided to customers

**Ability to propose solutions to challenges faced in co-creation**

Our sales personnel are strengthening their ability to listen so that they can identify potential problems that even customers are unaware of and then identify solutions.

Our sales representative, when visiting customers, spend 70% of their time listening and 30% making business proposals. With this approach, we have established a style of sales activities in which we co-create solutions to customer's problems by listening to them carefully. We will enhance sales skills group-wide while also receiving training from outside consultants.

**Ability to listen**

**We will take on three challenges that we have recently set**

**Three challenges**

**Procurement capabilities**

**Ability to circulate resources**

**Ability to globally procure materials**

Currently, we have eight overseas bases, mainly in Asia, and are actively engaged in global transactions of non-ferrous metals. Copper-based products are drawing attention worldwide as a raw material that is an indispensable part of the next generation of social infrastructure. Joining forces with Mitsubishi Materials Corporation, we will maximize the use of the infrastructure of our overseas locations and efficiently expand our global network.

**Ability to design resource-circulation plans**

Under the theme that the Mitsubishi Materials Group advocates, the designing of resource-circulation, we recycle unnecessary resources and materials for different purposes to make them work for society, instead of just disposing of them.

Leveraging the huge network that is unique to Mitsubishi Materials Trading, a company with about 2,000 client companies and about 2,500 suppliers, we will build a new business scheme from an SDG-oriented perspective. For example, waste materials rejected by Company A could be processed and given to Company B.

In April 2025, the sales division of Materials Eco-Refining, a company with an established track record and knowledge in the domestic and global collection of e-scrap and other kinds of recycled metal materials supplied to copper smelters, was integrated into Mitsubishi Materials Trading. We expect continued growth, capitalizing on the synergies with our overseas network infrastructure.



## Building schools and hospitals

- Ready-mixed concrete
- Cement
- Makibei (fire-resistant coating materials)
- Nano adhesion technology: floor paint and anti-rust paint
- Copper alloys
- Aluminum
- Controlled expansion alloys
- Slot dies
- Copper hollow conductors
- Construction tools for mining, quarrying, tunnel excavation and urban development
- ECO BRASS®
- GloBrass®

## Constructing tunnels

- Waste disposal and contaminated soil treatment
- Construction tools for mining, quarrying, tunnel excavation and urban development

## Constructing roads

- Cement-based soil stabilizer
- Lime
- Waste disposal and contaminated soil treatment
- Superior sealing products (for vacuum/semiconductors, automotive, hydraulic and pneumatic systems, and industrial machines)
- Castings (precision casting, die casting)
- Cutting tools
- Construction tools for mining, quarrying, tunnel excavation and urban development

## Manufacturing aircraft

- Cutting tools
- Processed copper products
- Corrosion-resistant alloys
- Heat-resistant alloys



## Constructing buildings

- Water holding tanks and elevated water tanks
- Cooling towers
- Nano adhesion technology: floor paint and anti-rust paint
- Wirerod
- Copper alloys

- Controlled expansion alloys
- Aluminum
- Construction tools for mining, quarrying, tunnel excavation and urban development)
- Copper hollow conductors
- ECO BRASS®
- GloBrass®

## Useful to factories

- Auxiliary materials for factories
- Non-ferrous metal recycling
- Waste disposal and contaminated soil treatment
- Cutting tools
- Cemented carbide rotary die cutter (anvil roll)
- Nano adhesion technology: floor paint and anti-rust paint
- Oil-water separation unit (hydrophilic and oil-repellent element/filter unit)





### Used on roads

- Premixed grouting mortars for semi-flexible, water-retaining pavement (Hoso-Ace series)
- RoadGuard Kit, early release maintenance kit

### Constructing bridges

- Armor series of concrete repair materials
- Cutting tools
- Construction tools for mining, quarrying, tunnel excavation and urban development

### Building ships

- Cutting tools

### Manufacturing automobiles

- Job coating service (DLC coating, surface modification, etc.)
- Superior sealing products (for vacuum/semiconductors, automotive, hydraulic and pneumatic systems, and industrial machines)
- Aluminum
- Wirerod
- Slot dies
- Deep drawing, press components (component combination, machineless forging)
- Carbon-fiber reinforced plastics (CFRP)
- Cutting tools
- Castings (precision casting, die casting)
- Electric contacts for automobiles, electric contacts for home appliances, power contacts
- Copper hollow conductors
- ECO BRASS®
- GloBrass®

- Indirect lightning solutions and LITOL lightning arresters for electrical panels (LTP series)
- Aluminum
- Electric contacts for automobiles, electric contacts for home appliances, power contacts
- Wirerod
- Finished special alloy products (facilities, equipment, parts)
- Diamond wheels (grindstones and grinding wheels)
- Slot dies

- Processed copper products
- Copper alloys
- Controlled expansion alloys
- Corrosion-resistant alloys
- Heat-resistant alloys
- Copper hollow conductors
- Superior sealing products (for vacuum/semiconductors, automotive, hydraulic and pneumatic systems, and industrial machines)
- Corrosion- and heat-resistant alloy hoop materials

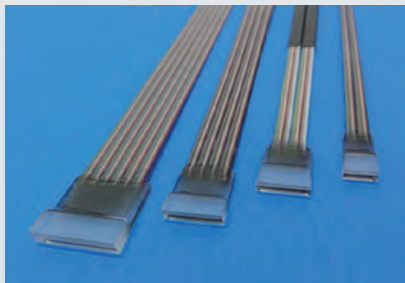
- Corrosion- and heat-resistant alloy pipes
- Products for renewable energy system

### Electronics



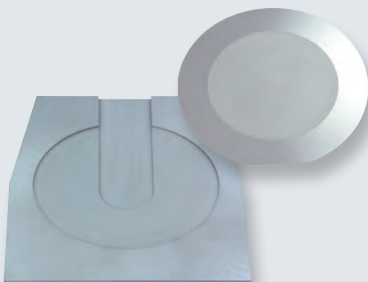
#### Gold-tin alloy solder pastes

These are used to bond and seal precision components.



#### Optical fiber arrays

These are a key device in the arrangement of optical fibers for the transmission of optical data.



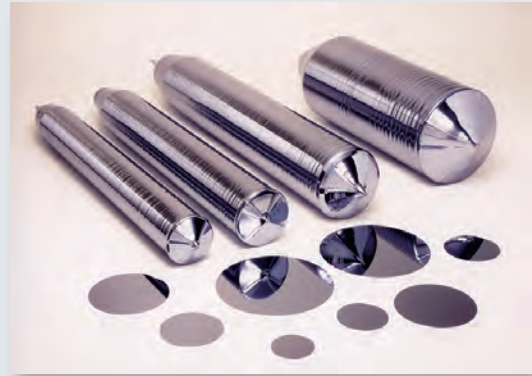
#### Example of the processing of mono-crystal silicon (counterboring)

We stably supply high quality mono-crystal silicon parts. We are able to respond to small lot orders for prototyping, research and equivalent purposes.



#### Polycrystalline silicon

These polycrystalline silicon products are eleven-nine (99.99999999%) pure.



#### Silicon wafers

We respond to many different requests for diverse types of silicon wafers ranging from high quality mono-crystal wafers to small wafers.



LTP-125RF



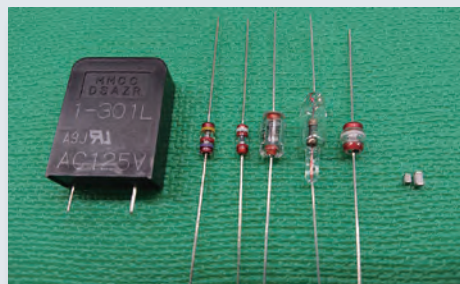
LTP-250RF



LTP-400RF

#### LITOL (lightning arrestors)

These instantly respond to lightning-induced electrical surges to protect a variety of equipment.



#### Surge absorber

Mitsubishi Materials' microgap surge absorber is a surge protection element for a discharge tube with excellent surge response. It supports various surge protection technologies for power supply lines, communication lines, and static electricity.



#### NTC thermistors

They use unique raw materials to achieve high-accuracy temperature measurements. They include SMD, lead wire types, and customized types supporting various packaging forms.





## Treatment of different types of industrial waste and contaminated soils at cement plants

We contribute to the conservation of the global environment and resource recycling by processing various wastes to make substitute cement materials and thermal energy at the cement plants of Mitsubishi UBE Cement Corporation.



Polluted soil



Waste plastic



Incinerated ash



Waste gypsum board powder



Wood waste

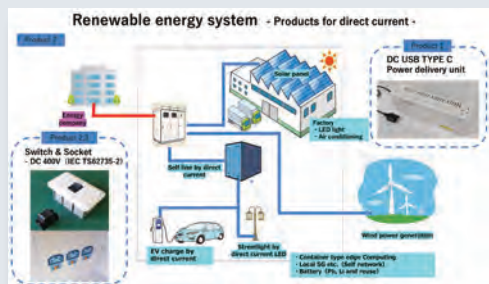


We offer the optimal total, coordinated solution, encompassing the entire process from the collection and transportation of industrial waste to its disposal.



## New environmental design initiatives

Through the proposal of new disposal methods for construction and waste-water sludge and hard-to-manage materials, we encourage recycling and help reduce environmental impacts.



## Products for renewable energy system

It's attracting attention for high efficiency electric supply. Providing Switch, Socket and USB power delivery unit.



## Lubricon® (LUBRICON A-112M)

The plant-based active enzymes absorb a large amount of oxygen and improve the combustibility of fuel.



## Oil-water separation filter element and filter unit

With hydrophilic and oil repellent technology, they separate water and oil easily and quickly.



## Non-ferrous metal recycling at non-ferrous smelting plants

Mitsubishi Materials' smelters accept and recycle scrap containing copper, noble metals, rare metals, etc. to be used as raw materials.



Base boards



Crushed e-waste



Lead frames



Sludge



Blast dust (raw material)



Jewelry (raw material)



Palladium (product)



Platinum (product)



Copper waste solution

## Smelting and recycling

Base boards, e-waste, sludge

## PGM recovery (aqueous recovery)

Precious metal and rare metal scrap containing Pt/Pd

## Waste liquid treatment

Etching waste solution containing copper

## Copper Materials and Processed Products



### Copper materials

We offer a wide range of copper materials ranging from Cathode produced at MMC Group's copper smelters to Billets, Cakes, Wire, Rods, Strips, Plates, Bars and other various products.



### Finished copper products

We offer various finished copper products after processing including Bending, Pressing, Etching, Bonding and the others.



### Hollow copper conductors

As Luvata (Finland)'s agent in Japan, we provide their hollow copper conductors according to your specifications.



### ECO BRASS®

Mitsubishi Materials Corporation's proprietary lead-free brass material that implements high-quality and high cost performance.



### GloBrass®

New lead-free brass product developed based on general brass.

## Metal Materials & Manufactured Goods



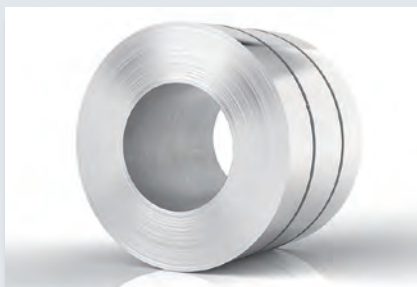
### Corrosion and heat-resistant alloy bolts

We are able to produce bolts and other processed items made of corrosion- and heat-resistant alloys according to the customer's needs.



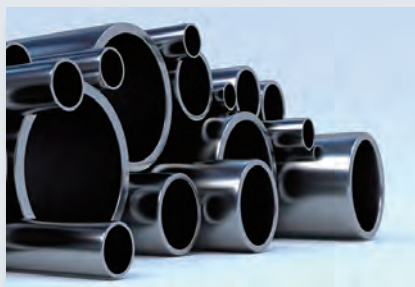
### Special corrosion-, heat- and wear-resistant alloy materials

We can design and produce towers and tanks that must be resistant to corrosion and heat, such as reaction tanks, heat exchangers and towers, according to the needs of the customer.



### Corrosion- and heat-resistant alloy hoop materials

We provide heat- and corrosion-resistant alloy hoop materials and thin plates according to the specifications requested by the customer.



### Corrosion- and heat-resistant alloy pipes

We provide all kinds of pipes including thin seamless pipes and welding pipes that can be used in corrosion- and heat-resistant environment.



### Corrosion-resistant alloy joints

We provide joints made of corrosion-resistant alloys.



## Mobility Parts



### Motors and inverters

We can meet all needs, even for the development or small-lot productions.



### Busbars

With our high precision presses and extrusion production capacity of 500 tons per month extrusion capacity, we can maintain a stable supply.



### NVH solutions (Anti-vibration rubber products)

We can propose optimal solutions based on our stable material procurement capability and high-precision analysis technology.



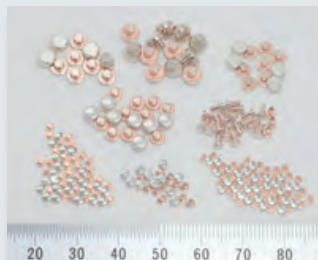
### Castings (precision casting, die casting, gravity casting)

Whatever the material, we propose the optimal production technique.



### Deep drawing, press components (component combination, machineless forging)

With 400-ton press machines that are capable of deep drawing up to a depth of 100mm and size control down to 20  $\mu$ m, we can supply high-precision press components.



### Electric contacts

Switch and relay contact components that open and close an electric circuit. They are used in many home electric appliances and automotive devices.



### High performance composite resin seal

It can be used in environments where rubber alone would have durability problems. It is resistant to chemicals and has low sliding characteristics.



### CF RTP

Different kinds of sleeves and bushings can be mass-produced by injection molding to help reduce cost. They are used to increase the durability and strength of motor gears, shafts and other items.

## Automobile interior coatings



### Piano black coatings

They provide very glossy and thick coating film. They are high in chemical resistance requisite to automobile interior components.



### Metallic silver coatings

With excellent heat, water and chemical resistance, these coatings provide good metallic orientation and design characteristics supporting a metallic look.



### Matte coatings

These coatings feature strong adhesion to different kinds of plastics and a highly concealing matte finish. They also have superior chemical resistance.



### Various Magnets

We offer magnets for a range of applications, including alnico, iron chrome cobalt, samarium cobalt, neodymium and ferrite magnets.

## Carbide Tools



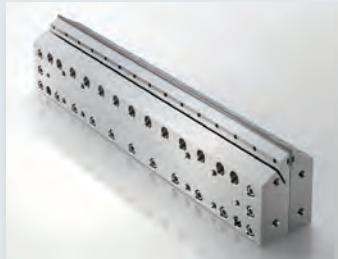
### Cutting tools

We provide the cutting tools and other products from Mitsubishi Materials Corporation and other manufacturers in Japan and abroad that are suited to the customer's needs.



### Gun drills

We provide high performance gun drills from specialists within a short delivery period.



### Slot dies

Slot dies are precision coating tools. We adjust and provide slot dies for many different applications to fulfill the customer's need for wear resistance, corrosion resistance and other properties.



### Rock drilling tools

Rock Tools are used in Mining, Quarrying, Tunneling, and Urban Development.



### Rotary die cutter

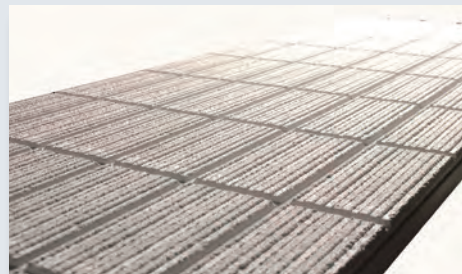
Our cutters incorporate our unique technology prolonging the service life of blade edges. Increased accuracy can be obtained by using cutters with a high-accuracy/high-rigidity unit.

## Construction Materials



### Construction materials

Ready mixed concrete  
Cement  
Soil stabilizing cement (U stabilizer)  
Lime  
Hoso-Ace  
Armor  
Secondary concrete products  
Fluidized soil (human-made soil)  
FRP water holding tanks and elevated water tanks  
Cooling tower  
ALC  
Extruded cement panel (Mace)  
Wrap-type fireproof covering (Makibei)  
Modular kitchen (Takara Standard)  
Modular bathroom  
Rooftop daylighting (Top Light)  
Rooftop ventilator (Roof Fan)



### ALC panels

ALC panels are used for interior walls, floors, roofs and other parts of buildings.





## Industrial equipment

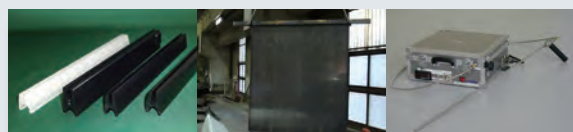
Equipment machinery  
Machine Tools  
Transport and conveyance equipment  
Chemical machinery  
Power machinery  
Environmental systems  
Testing and inspection equipment  
Operation materials



We select the products that are best suited to the diverse needs of our customers from among products that come from many different manufacturers.

## Smelting-related parts and materials

We handle a range of products including protectors for metal electrolysis, lead anodes, and molten metal immersion type optical fiber thermometers.



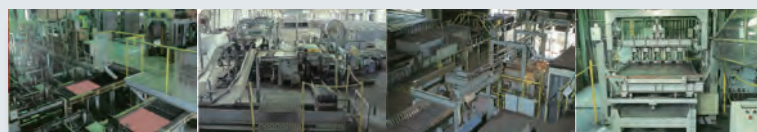
Snapjaws™

Lead anode

Optical fiber thermometer

## Copper-related equipment

Our copper electrolysis related equipment has been used in many copper refineries both in Japan and overseas. In addition to the following equipment, we also handle anode scrap cleaning equipment, cathode cleaning equipment, and negative plate debonding machines.



Negative plate debonding machine

Loop slitting line

Anode straightener

Motherboard polishing machine

## Fine Gold Cards

### Fine gold card products

Fine gold business card  
Fine gold certificate of commendation  
Fine gold bookmark



Fine gold bookmark



Fine gold business card



Fine gold certificate of commendation

We are afraid but can't take order from overseas.

## Locations

### Head Office

17F, Nihonbashi Hamacho F-Tower, 3-21-1, Nihonbashi Hamacho, Chuo-ku, Tokyo, Japan 103-0007  
TEL +81-3-3660-1682 FAX +81-3-3660-1650

### Singapore Branch

10 Anson Rd, #32-09, International Plaza, Singapore 079903  
TEL +65-6221-7233 FAX +65-6325-4220

### Seoul Branch

#2227, Gwangwhamoon Official Bldg, 92, Semoonan-ro, Jongro-gu, Seoul, Korea  
TEL +82-2-3474-2331 FAX +82-2-733-2331

### Australia Branch

180 Daly Street, Belmont, WA 6104, Australia  
TEL +61-8-6185-1025

### Hanoi Office

2nd Floor DMC Building, 535 Kim Ma Street, Ngoc Khanh ward, Ba Dinh, Hanoi, Vietnam  
TEL +84-24-6684-7978

### Taipei Office

12F-4, No. 17, Sec. 1, Chengde Rd., Datong Dist., Taipei City, 103613 Taiwan (R.O.C.)  
TEL +886-2-2555-3580



**A large number of the products we deal in are found on our website.**



Website in Japanese

<https://www.mmtc.co.jp/>



Website in English

<https://www.mmtc.co.jp/en/>

**We deliver solid value to customers.**

**Feel free to contact Mitsubishi Materials Trading.**

